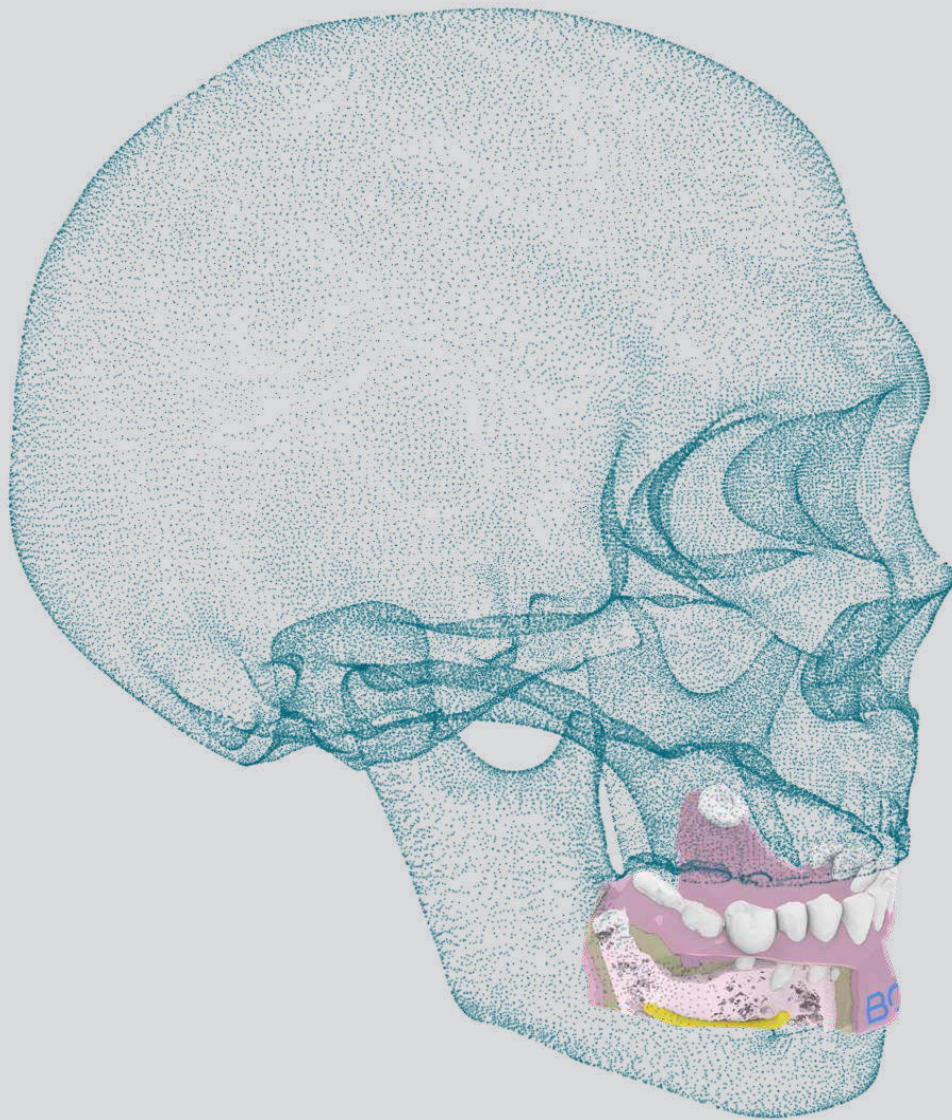


TRAIN

BUCCO-Train

Our 3D printed simulators for oral surgery training



CONTACT:

contact@bone3d.com

+33 1 73 71 45 44

TECHNOLOGIE
3D

MADE IN
FRANCE

- **Technical data :**
- Multi-material polyjet printing
- Anatomical realism
- Sensory feedback

Elements :

Bone (mandibular or maxillary) : Trabecular and cortical part

Gum

Nerve: Possibility to have a hard or soft nerve according to your needs.

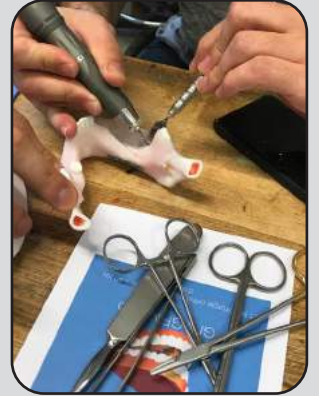
Teeth: Choice of teeth (possibility of extractable teeth)

Artery

A custom made model

We can design a model according to **your specifications**.

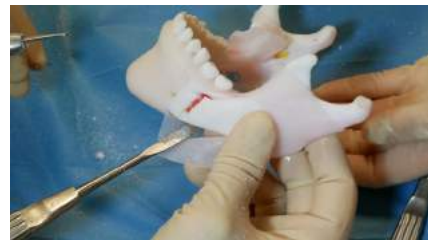
We can also create a model from our catalogue in a **patient specific** version thanks to your **DICOM data** and a **dental impression**.



Implantology



Osteotomy



Bone transplant



Sinus Lift



IMPLANTOLOGY

3 models :

- Maxilla,
- Mandible
- Reusable Mandible

Surgical acts :

- Gum incision,
- Gum detachment,
- Drilling,
- Suture,
- Implant placement

MANDIBLE WITHOUT RAMUS



MAXILLA



MANDIBULAR SUPPORT & REFFIL



Reference	Product
BONE-TR-BU-A-001	Mandible without ramus
BONE-TR-BU-B-001	Maxilla alone
BONE-TR-BU-A-BAS-001	Reusable mandibular support without ramus
BONE-TR-BU-A-RCH-001	Refill for mandibular support

BONE TRANSPLANT

2 models :

- Mandible
- Maxilla

Actes réalisables:

- Milling,
- Rammic swab,
- Bone transplant,
- Suture

COMPLETE MANDIBLE FOR BONE TRANSPLANT



MAXILLA FOR BONE TRANSPLANT



USED MAXILLA FOR BONE TRANSPLANT



Catalogue

Reference	Product
BONE-TR-BU-A-004	Complete mandible for bone transplant
BONE-TR-BU-B-004	Maxilla for bone transplant

SINUS LIFT

Several anatomical configuration :

demi or bilateral version

- Sinus lift single tooth 26/16,
- Sinus lift bone apposition 24/14

Surgical acts :

- Gum incision,
- Drilling,
- Schneider membrane removing

BONE APPPOSITION



SINGLE TOOTH



DEMI-SINUSLIFT WITH SUPPORT



Catalogue

Reference	Product
BONE-TR-BU-B-005	Bi-lateral sinus lift single tooth 26/16
BONE-TR-BU-B-006	Bi-lateral sinus lift bone apposition 24/14
BONE-TR-BU-B-BAS-001	Reusable maxillary support for sinus lift
BONE-TR-BU-B-RCH-005	Half sinus lift single tooth 26
BONE-TR-BU-B-RCH-006	Half sinus lift bone apposition 24

ORTHOGNATIC

2 models :

- Mandible with osteotomy without gum
- Complete mandible with gum

Surgical acts :

- Gum detachment,
- Osteotomy,
- Milling,
- Nerve Isolation

COMPLETE MANDIBLE



THREE PART MANDIBLE - WITHOUT GUM



THREE PART MANDIBLE - WITHOUT GUM



Catalogue

Reference	Product
BONE-TR-BU-A-003	Mandible with three-part sagittal osteotomy - without gums
BONE-TR-BU-A-002	Orthognathic Surgery Simulator - Complete Mandible

ZYGOMATIC IMPLANT

2 models :

- Maxilla
- Demi-Maxilla

Surgical acts :

- Incision
- Gum detachment,
- Drilling,
- Zygomatic implant placement

MAXILLA



DEMI-MAXILLA



DEMI-MAXILLA WITH SUPPORT



Catalogue

Reference	Product
BONE-TR-BU-B-007	Maxilla for zygomatic implant
BONE-TR-BU-B-008	Demi-maxilla for zygomatic implant

CUSTOM-MADE SIMULATOR EXAMPLE

We can design a simulator model for your specific needs : a single simulator for several exercises is more useful. An upcoming workshop ? Contact us and let's design together the simulator that will meet all your pedagogical needs.



Specifications of this model designed on request

Maxilla (modèle symétrique)

- Possibility of 11,12,21,22 extraction
- Placement of a «classic» implant in 24.14
- Sinus lift single tooth in 26.16

Mandible

- Full edentulous

The black brackets on the photos have been added on the model to adapt to the articulator provided by the buyer.